



Campus-to-Campus Bicycle Connection

concerned citizens promoting a campus-to-campus bike route

- build on existing University/Town commitments
- educate/advocate/facilitate
- promote a dedicated bike route that is segregated from auto traffic



CCBC Goals

- public involvement
- coordination and cooperation between Chapel Hill, Carrboro, UNC, and CCBC
- a dedicated bike route within three years

Bicycle-friendly Cities

(a solution to urban traffic problems)

PARADE

Thursday, November 05, 2009

REINVENTING AMERICA

A Free-Wheeling City

by Bill Donahue

published: 09/27/2009



OTHER BIKE-FRIENDLY CITIES

Besides Columbia, Mo., and Portland, Ore., many other cities are promoting bicycling. Some innovative plans:

- **Boulder, Colo.**

At least 95% of major roads have bike lanes or trails. In 2005, the city was among the first to launch a Safe Routes to School program to encourage kids to walk and bike to school.

- **Tucson, Ariz.**

All new street construction is required to include bike lanes. The city created a "Share the Road" safety guide for bicyclists and motorists.

- **Davis, Calif.**

One of the first cities to incorporate bicycling into its transportation infrastructure, the university town of 60,000 has more bikes than cars.

Bicycle-friendly Cities (a solution to urban traffic problems)

New York NY



Portland OR



Chapel Hill???

Transit Challenges Raised by Carolina North

type of trip	daily use projected for 2015	daily use projected for 2025
vehicle	5,049	23,261
park & ride	1,248	4,089
public transit	1,941	6,438
walk/bike/other	1,197	5,957

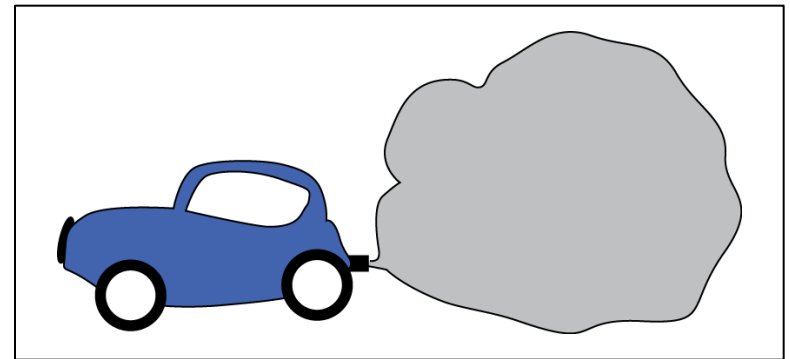
The Benefits of Cycling



1 cyclist = 1 less parking space required per trip



1 cyclist = 4.86 lb less of CO₂ emitted per trip



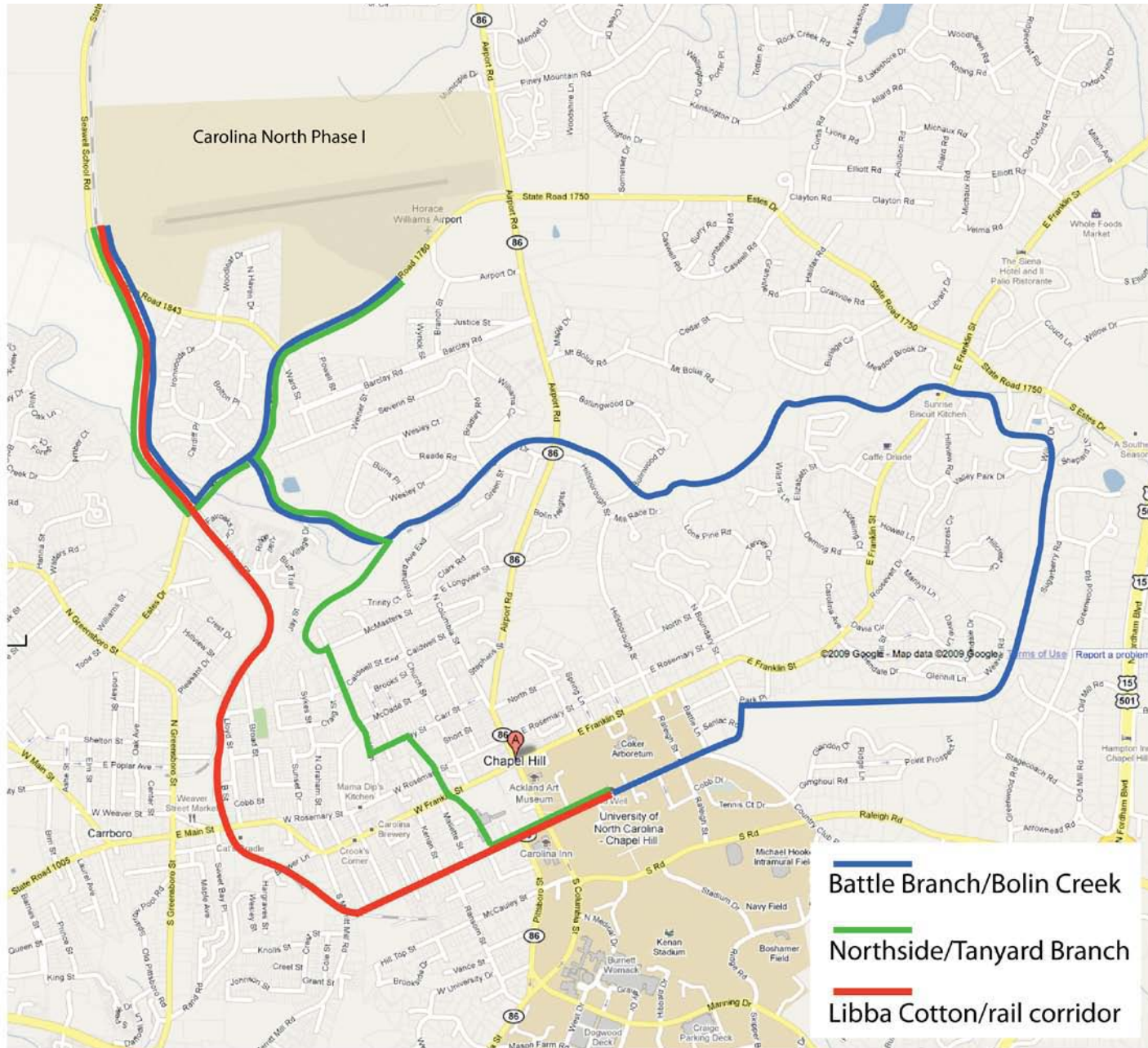
The Risks of Cycling



1 cyclist = 1 life at risk on unsafe city streets



Possible Bicycle Connectors - Main Campus to Carolina North



Battle Branch/Bolin Creek



ADVANTAGES

- scenic/primarily off-road
- manageable grades
- joins existing greenway
- crosses under major streets

CHALLENGES

- indirect route
- inadequate lighting
- potential conflict with pedestrian use



Northside/Tanyard Branch



ADVANTAGES

- most direct
- uses UNC and Town property
- connects neighborhoods
- low traffic density

CHALLENGES

- crosses Franklin/Rosemary
- widths of streets/lanes
- some private property
- inadequate lighting



Libba Cotton/rail corridor



ADVANTAGES

- relatively direct
 - scenic, with modest grades
 - extends well-established bike trail
- bike trail

CHALLENGES

- railroad owns right-of-way
- crosses Main St in Carrboro
- major construction required





Proposed Milestones:

- Identify three connecting routes by November 2010 report ...
 - With a plan to build one by 2013
- Schedule two additional public workshops before Nov. 2010 ...
 - To include feedback on staff proposals

CCBC Petitions the Town Council

- To refer our letter to all relevant Advisory Boards
- To solicit Advisory Board comments on the proposed milestones